

HAND HYGIENE STATION ASSEMBLY INSTRUCTIONS

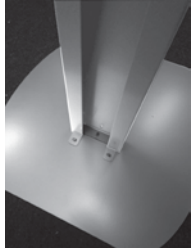
Contents:

- (1) Base
- (1) Bottom Column with Tabs
- (1) Top Column with Posts
- (3) Acorn Nuts
- (4) Phillips Head Screws
- (2) Plastic Fasteners
- (1) Graphic Sign

Tools Needed:

- Phillips Head Screwdriver
- 3/8" Box Wrench

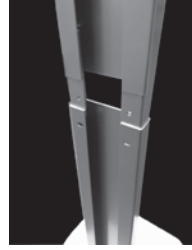
Assemble Floor Stand



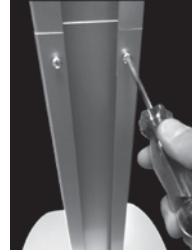
1. Place column with tabs onto base as pictured. Make sure that threaded posts go through the holes in the tabs.



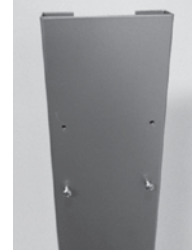
2. Using the acorn nuts provided, secure the base by tightening with a 3/8" box wrench. **DO NOT OVERTIGHTEN.**



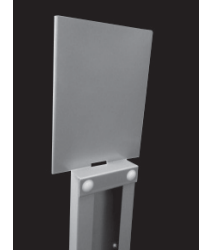
3. Slide the top half of the column onto the bottom half making sure that the holes line up.



4. Using (2) Phillips head screws, secure the top half of the column to the bottom using screwdriver.



5. Insert (2) Phillips head screws into lower holes on top column (screw in halfway).



6. Align graphic sign with holes in top of column. Secure using (2) plastic fasteners.

Attach NEW or OLD Dispenser

The dispenser can be screw or tape mounted. **Screw mounting is recommended for easy removal.** Once tape mounted, the dispenser and tape are difficult to remove.

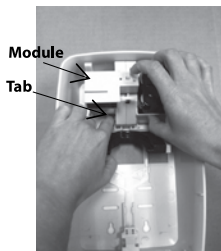
- The dispenser can be screw mounted at two (2) heights (Standard and Low).
- Standard is recommended for most applications and dispenses approximately 43" off the ground.
- Low can be used if 41" off the ground is preferred.

If tape mounting, remove paper backing then center dispenser at desired height and press firmly against column.

- Let tape set at least 8 hours before inserting refill bag.



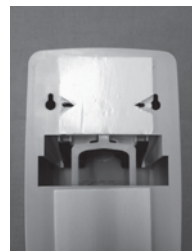
NEW Dispenser (Use upper holes for Standard height and lower holes for Low height)



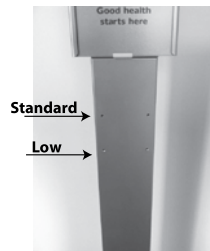
1. Open dispenser. Push tab to the left and lift up to remove electronic module.



2. From inside dispenser, poke a hole with a pencil through the outer ends of the two upper horizontal slots.



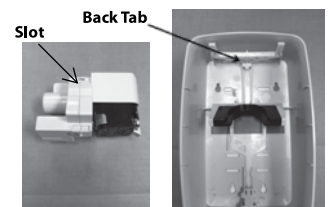
3. Cut and remove paper backing and foam tape that covers the ends of the slots. **DO NOT REMOVE ENTIRE PAPER BACKING.**



4. Remove screws and determine Standard or Low height position and locate the corresponding holes on the column.

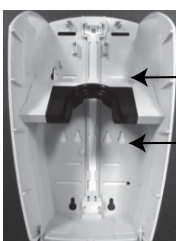


5. Align dispenser with Standard or Low holes in column and insert screws through slots and into column until snug. **DO NOT OVERTIGHTEN.**

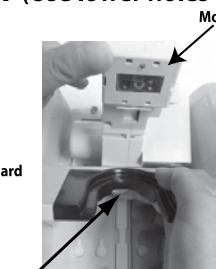


6. Replace electronic module by tucking the slot under the back tab and snapping down into place. Follow dispenser Instructions for Filling and Operation.

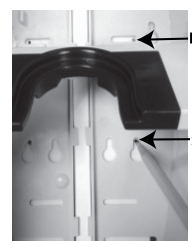
OLD Dispenser (Use lower holes in Top Column for both heights)



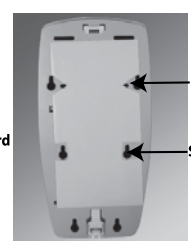
1. Select Standard or Low height and locate corresponding holes or slots.



2. Open dispenser. If Low Height, remove module by pulling tab under module while lifting module up.



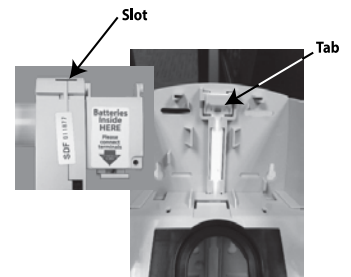
3. From inside the dispenser, poke a hole with a pencil through the foam tape in the top or outer ends of the corresponding slots (as shown above).



4. Cut and remove paper backing and foam tape that covers the mounting holes or slots only. **DO NOT REMOVE ENTIRE PAPER BACKING.**



5. For Standard Height, simply place dispenser over the screws on the column, set and tighten screws. For Low Height, screws will have to be removed from the column, inserted through the upper slots and screwed back into the column until tight.



6. Replace Module by tucking slot under the tab and snapping into place. Follow dispenser Instructions for Filling and Operation.